

YOUR TAX DOLLARS AT WORK

Measure L Annual Report
Fiscal Year July 2023 – June 2024



1111 I Street, Suite 308
Modesto, CA 95354

www.StanislausMeasureL.com



Table of Contents

Message from the Executive Director	5
Measure L Financial Overview	6
Member Agency Highlights	9
Regional Project Highlights	23
Transit In Stanislaus County	28
About StanCOG and Measure L Oversight	30

MESSAGE

FROM THE EXECUTIVE DIRECTOR

Putting your Measure L Funds to work in the Stanislaus region.

The Stanislaus Council of Governments (StanCOG) is pleased to present the seventh annual Measure L Annual Report covering the period of July 1, 2023, through June 30, 2024. This Annual Report celebrates the significant progress the Stanislaus region has made in transportation infrastructure improvements over the past year using Measure L funds.

The passage of Measure L, a 25-year, ½-cent sales tax for transportation improvements in the Stanislaus region, was approved by Stanislaus County voters by an overwhelming 72% in November of 2016. It was a transformative achievement for Stanislaus County, officially designating it as a “Self-Help” county. This crucial designation enables StanCOG and our local agencies to use voter-approved funds more effectively by qualifying for and leveraging a larger share of state and federal dollars.

As the region’s Local Transportation Authority (LTA), StanCOG administers Measure L funds. Our unwavering commitment to accountability and transparency is focused on working with our local agencies to ensure that every dollar is strategically maximized to enhance road safety, alleviate traffic congestion, and improve connectivity in the region.

We are pleased to report that the Stanislaus region continues to make substantial progress, as promised, in using Measure L funds for the benefit of our residents. The dedication from our local agencies who work with StanCOG illustrates our collective efforts to foster a stronger, more resilient transportation system to enhance the quality of life and well-being for the residents of Stanislaus County.



Rosa De León Park

**EXECUTIVE
DIRECTOR**

December 31, 2024

MEASURE L FINANCIAL OVERVIEW

Measure L is a voter-approved one-half cent sales tax over 25 years (April 1, 2017-March 31, 2042) dedicated to much-needed transportation improvements in Stanislaus County. StanCOG administers the funds, which is used to repair local roads, improve traffic safety, enhance public transit, and build better infrastructure for pedestrians and cyclists.

Sixty-five percent (65%) of the revenue is distributed to Measure L member agencies (Stanislaus County's nine cities and Stanislaus County) for local transportation projects. The remaining 35% of the revenue is used as follows: 28% for 16 designated regional

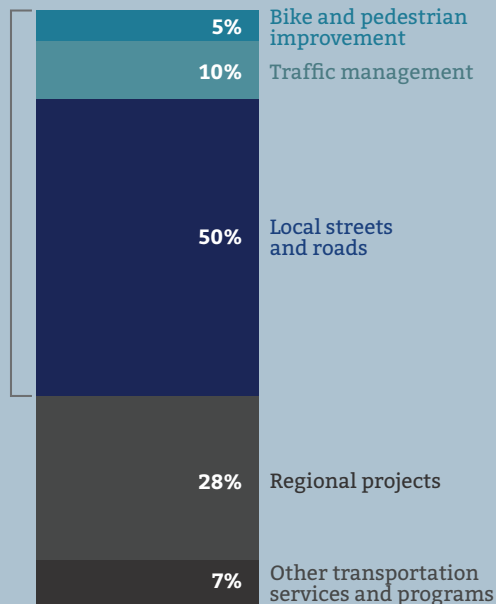
projects and 7% for four transportation programs and services, including point-to-point services for seniors, Veterans, and persons with disabilities; Community Connections; transit services; and rail services.

Of the 65% of local control funds, 50% is required to be used for local streets and roads projects, 10% for traffic management, and 5% for bike and pedestrian improvement projects.

The following is a summary of the Measure L revenue and expenditures for FY 2023/24 (July 1, 2023 through June 30, 2024) as shown on page 7.

65% Local Control Funds

65%
Local Control Funds



MEASURE L FISCAL YEAR 2023/24	REVENUE	EXPENDITURES
Local Control Funds (65%)		
Streets & Roads	\$29,934,618	\$26,011,619
Traffic Management	\$5,986,924	\$1,688,343
Bike & Pedestrian Projects	\$2,993,462	\$4,830,538
Regional Projects (28%)	\$16,763,386	\$15,253,949
Other Transportation Programs & Services (7%)		
Point-to-Point Services	\$1,257,254	\$1,348,936
Community Connections	\$1,257,254	\$0
Transit Services	\$838,169	\$838,257
Rail Services	\$838,169	\$0
StanCOG Administration	\$604,740	\$604,740
Totals	\$60,473,976	\$50,576,382

Measure L Attracts Funding to Stanislaus County

Many state and federal grants require local agencies to provide “matching funds” to qualify. StanCOG and its member agencies are using Measure L revenue as the matching funds to attract millions of dollars to the county to make much needed transportation improvements.

Since 2016, StanCOG and its member agencies qualified for more than \$126 million in grant funding thanks to Measure L. That’s a huge win for Stanislaus County!

MEMBER AGENCY HIGHLIGHTS

StanCOG's member agencies are receiving much-needed funding from Measure L to make local transportation improvements in their communities. In this section, learn about projects completed in FY 2023/24 and preview what's ahead in FY 2024/25.



CITY OF CERES

Building Better Roads and Enhancing Safety and Longevity

With a commitment of \$875,000 from Measure L funds to its annual pavement resurfacing project, the City of Ceres was able to focus on pavement in seven key areas around the city in FY 2023/24. The project totaled over 465,000 square feet of cape seal, 780,000 square feet of slurry seal, 31,000 square feet of crack treatments, and 30,000 square feet of hot mix asphalt overlay.

By combining Measure L with other city funds, the City delivered more than \$3 million worth of improvements, increasing safety and reliability while ensuring the longevity of Ceres' roads.



Residents in Ceres saw new pavement in seven key areas around the city.



Moffett Avenue and Whitmore Avenue Rehabilitation Project: Improving and Reconstructing

In FY 2024/25, the City of Ceres will focus on rehabilitating Moffett Avenue from Whitmore Avenue to Hatch Road and Whitmore Avenue from Morgan Road to Crows Landing Road. These road rehabilitation projects will involve reconstructing the roads, improving drainage, and updating sidewalks and curb ramps. Additionally, the City will enhance intersections and install traffic striping, markings, and signage. Funding for this initiative will come from Measure L funds which will leverage the Federal Surface Transportation Block Grant (STBG) program.

FY 2023/24	REVENUE	EXPENDITURES
Ceres Streets & Roads	\$1,903,842	\$1,394,263
Ceres Traffic Management	\$380,768	\$0
Ceres Bike & Pedestrian	\$190,384	\$0
Total Ceres	\$2,474,994	\$1,394,263



CITY OF HUGHSON

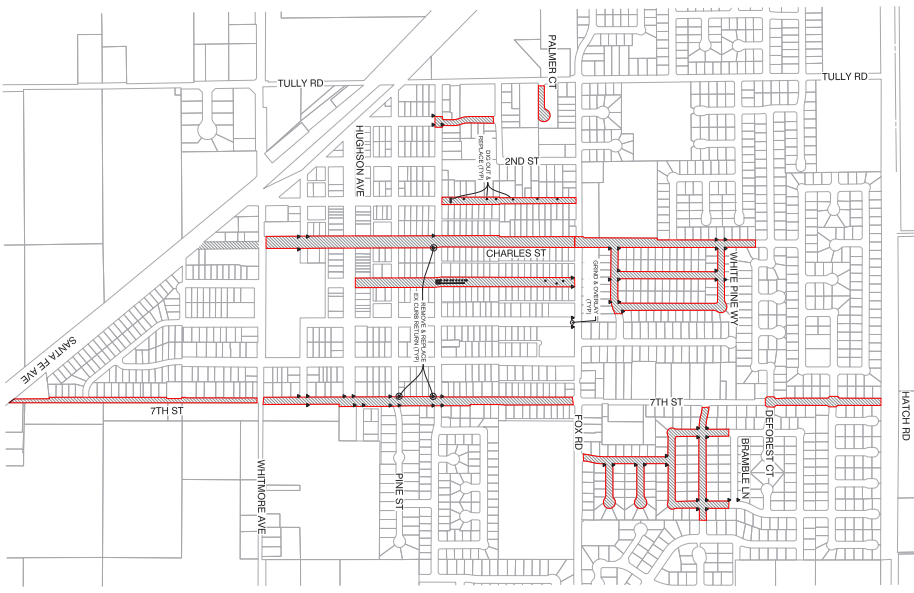
Surface Improvement Project (Phase I): Safer, Smoother Streets

Phase 1 of the City's three-year pavement management program is an ongoing project to maintain roads in a state of good repair. The paving program is funded by Measure L, California Senate Bill 1, and development impact fees.

In FY 2023/24, Phase I included a combination of Type II slurry seal covering approximately 2,500 square feet, a two-inch grind overlay for about 52,100 square feet, dig outs and replacement spanning approximately 6,550 square feet, and new striping. Dig outs are repairs done to replace failing roadbeds and support materials under the road. These spot repairs can be done to repair potholes or similar road hazards.



Many of Hughson's roads were repaved as part of Phase 1 of the pavement management plan.



Surface Improvement Project (Phase II)

The next phase of the Surface Improvement Project will include improvements to extend useful life on roads throughout the city. This phase includes applying a rubberized cape seal covering approximately 666,000 square feet, targeted dig out and replacement repairs across 4,800 square feet, and striping.

More roads will be repaved in FY 2024/25 as part of the City of Hughson's pavement management program.

FY 2023/24	REVENUE	EXPENDITURES
Hughson Streets & Roads	\$377,176	\$801,525
Hughson Traffic Management	\$75,435	\$0
Hughson Bike & Pedestrian	\$37,718	\$0
Total Hughson	\$490,329	\$801,525

CITY OF MODESTO

Paradise Road Area: Safer Streets for Walking and Biking

This project, completed in August 2024, provided pavement rehabilitation on Paradise Road between Sheridan Avenue and 1st Street, Jefferson Street between Paradise Road and Vine Street, and Washington Street between 2nd Street and 1st Street.

The work included pavement resurfacing, Americans with Disabilities Act (ADA) curb ramp upgrades, striping, signage, lighting, Rectangular Rapid Flashing Beacons (RRFB), pedestrian median islands, raised speed cushions, and traffic signal upgrades. The project also included the installation of roundabouts at the intersection of Paradise Road and Chicago Avenue and Washington Street and 1st Street.



The old crosswalk at Modesto High School has been replaced with a new crosswalk to provide safer, more convenient access for walkers and cyclists.

Upcoming Pavement Rehabilitation in Modesto

The City of Modesto is continuing its pavement rehabilitation program in FY 2024/25. The Scenic Drive Phase II project will provide pavement rehabilitation on Scenic Drive between Bodem Street and Oakdale Road. Work on Scenic Drive will include roadway resurfacing, striping, signage and ADA curb ramp upgrades.

A second project will provide pavement rehabilitation on Kansas Avenue between Carpenter Road and Morse Road. Work on Kansas Avenue will include roadway resurfacing, striping and ADA curb ramp upgrades.

FY 2023/24	REVENUE	EXPENDITURES
Modesto Streets & Roads	\$10,713,600	\$8,424,862
Modesto Traffic Management	\$2,142,720	\$885,058
Modesto Bike & Pedestrian	\$1,071,360	\$318,938
Total Modesto	\$13,927,680	\$9,628,857



CITY OF NEWMAN

Measure L Street Rehabilitation Project for 2025

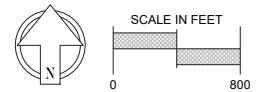
Next year, residents in the City of Newman will see roadway improvements in two areas. This initiative builds on the success of Newman’s 2019 Measure L project, which significantly improved the city’s overall Pavement Condition Index (PCI) rating.

The new project includes reconstruction of sections of L Street, rehabilitation of additional parts of L Street, Tulare Street, and M Street, and slurry sealing in various areas to extend and preserve roadway life. As a smaller city, Newman must pool funds for projects of scale. This project is currently being designed and is anticipated to be put out to bid in the summer of 2025 for construction in late 2025.



LEGEND

	CRACK SEAL AND SLURRY SEAL		PROPOSED NEW STRUCTURAL SECTION 5" AC OVER 18" AB
	PULVERIZE AND REPAVE WITH 3" AC OVERLAY		AREA WITHIN THE CITY LIMITS



Next year, roads in three areas in the City of Newman will be repaved.

FY 2023/24	REVENUE	EXPENDITURES
Newman Streets & Roads	\$377,176	\$1,041
Newman Traffic Management	\$75,435	\$208
Newman Bike & Pedestrian	\$37,718	\$105
Total Newman	\$490,329	\$1,354

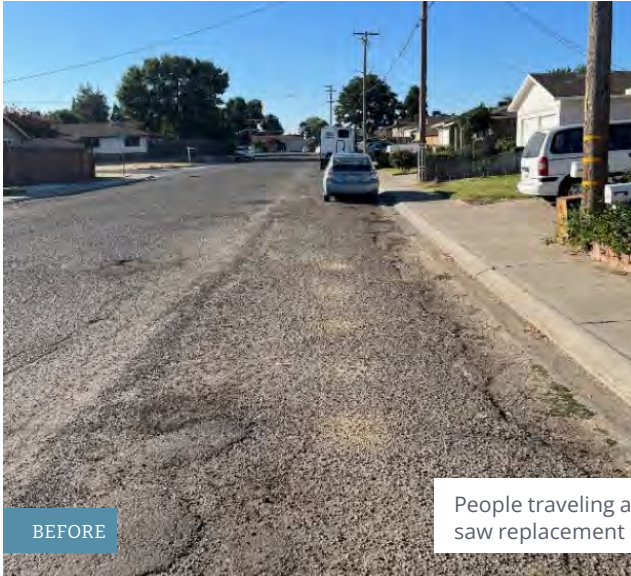


CITY OF OAKDALE

Cloverland Way Street Rehabilitation Project: Roads and Utilities Together

The project is generally located in the northeast quadrant of the City and spans between A and C Streets. It includes asphalt concrete (AC) pavement replacement, slurry seal treatment, replacement of sidewalk and curbs, and installation of ADA ramps. Other City -funded improvements included water, sewer, and storm drain utilities. Work on this project was completed in June 2024.

In past decades, road maintenance has been a challenge and Measure L has been a vital component to leverage maintenance and improvements to the City's street and utility infrastructure, including bicycle and pedestrian improvements and updates.



BEFORE



AFTER

People traveling along Cloverland Way saw replacement of the old pavement

Southwest Downtown Active Transportation Program: Safe Routes to School Street Rehabilitation Project

In FY 2024/25, multiple residential blocks between South Yosemite Avenue and Church Avenue, from G Street to J Street will be upgraded. Located in an economically challenged area, the project will provide street and utility infrastructure improvements as well as a Safe Routes to School component to neighborhood schools and parks. As Oakdale's most ambitious street and utility project to date, this effort promises a major boost for the neighborhoods involved.

FY 2023/24	REVENUE	EXPENDITURES
Oakdale Streets & Roads	\$1,155,476	\$1,675,167
Oakdale Traffic Management	\$231,095	\$27,904
Oakdale Bike & Pedestrian	\$115,548	\$191,345
Total Oakdale	\$1,502,119	\$1,894,416



CITY OF PATTERSON

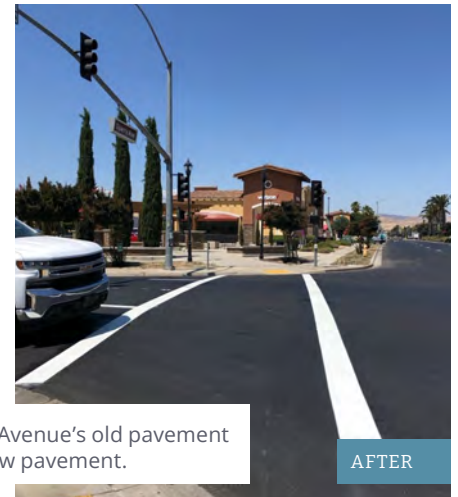
Sperry Avenue Overlay Phase II: Enhancing Road Quality and Accessibility

The Sperry Avenue Overlay Phase II Project, completed in 2024, involved upgrading a half mile stretch of Sperry Avenue, from American Eagle Avenue to Ward Avenue. The work included removing and replacing failed asphalt sections through targeted dig outs and applying a 0.2-foot overlay with paving fabric across all four lanes.

Within the limits of the overlaid pavement, new striping was added, along with refreshed crosswalks and pavement markings. Additionally, 11 ADA curb ramps were upgraded, with sections of concrete sidewalk and detectable warning surfaces removed and replaced to improve accessibility.



In FY 2023/24, Sperry Avenue's old pavement was upgraded with new pavement.



Pedestrian Controlled Crosswalk Safety Project

The Crosswalk Safety Project, which began construction in October 2024, will upgrade three intersections in the City of Patterson. Sperry and 9th Avenues and Ward and Las Palmas Avenue/ Mackilhaffy Drive are funded by the Community Connections Grant, while Hartley Street and Somerset Way will receive City Measure L funding.

The goal is to give pedestrians more control and enhance visibility at crossings, reducing accidents and creating safer intersections for all road users.

FY 2023/24	REVENUE	EXPENDITURES
Patterson Streets & Roads	\$1,362,025	\$1,244,558
Patterson Traffic Management	\$272,405	\$0
Patterson Bike & Pedestrian	\$136,203	\$0
Total Patterson	\$1,770,633	\$1,244,558



CITY OF RIVERBANK

Claribel Road Overlay Project

This project, completed in August 2024, included pavement overlay of Claribel Road from Squire Wells Way to approximately 1,300 feet west of Roselle Avenue. It included asphalt dig outs, asphalt grinding, asphalt concrete paving, striping, and adjusting structures to grade.

The City partnered with Stanislaus County through a Cost Sharing Agreement to complete the project. Acting as the lead agency, the City oversaw all aspects of the project, including design, bidding, awarding, inspections, and overall project management. Both the City and County used Measure L funds to support this improvement.



BEFORE



AFTER

Claribel Road repavement project.

Making Roselle Avenue & South Rosebrook Drive Safer for Everyone: Intersection Improvements for Walkers, Cyclists, and Students

Next year, at the Roselle Avenue and South Rosebrook Drive intersection, the City of Riverbank will make sidewalk improvements with bulb-outs, ADA accessible ramps, installation of medians, pavement

improvements, and installation of crosswalks and bike lanes. This intersection is located next to a bus stop and is highly traveled by pedestrians and students.

FY 2023/24	REVENUE	EXPENDITURES
Riverbank Streets & Roads	\$1,023,764	\$647,983
Riverbank Traffic Management	\$204,753	\$34,418
Riverbank Bike & Pedestrian	\$102,376	\$493,275
Total Riverbank	\$1,330,893	\$1,175,676



CITY OF TURLOCK

Enhancing Pedras Road: Safe and Accessible Connections

The Pedras Road Rehabilitation Project, completed in August 2024, rehabilitated 0.8 lane miles of aging asphalt on a two-lane connector road that provides direct access to one of the City's largest and most heavily used community parks.

The work included 420 linear feet of new ADA-compliant sidewalk, 26 upgraded ADA access ramps, upgraded ADA pedestrian signal push-buttons and countdown heads at one intersection, one new street light, and new high-visibility crosswalk striping.



BEFORE

Pedras Road repavement project.



AFTER

Upcoming Improvements in Turlock

Next year, traffic flow at West Main and Tegner in Turlock will improve with the installation of left turn lanes and a traffic signal. On the roads surrounding Donnelly Park, aging asphalt will be rehabilitated, access ramps upgraded, and high visibility crosswalks installed.

FY 2023/24	REVENUE	EXPENDITURES
Turlock Streets & Roads	\$4,568,023	\$1,921,135
Turlock Traffic Management	\$913,605	\$3,479
Turlock Bike & Pedestrian	\$456,802	\$0
Total Turlock	\$5,938,430	\$1,924,614

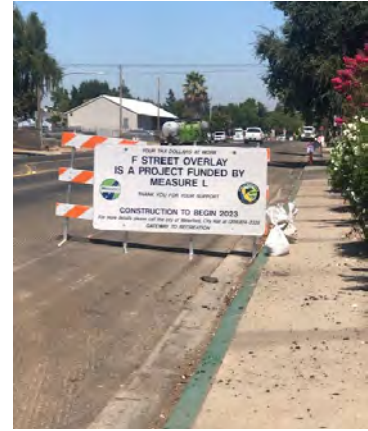
CITY OF WATERFORD



Improving F Street: A Major Upgrade for Heavy Traffic Use

Years of heavy traffic, including large commercial vehicles, had left F Street in poor condition, with numerous deep ruts and potholes that made the road rough and in need of frequent repairs. The F Street Overlay Project, completed in September 2023, was conducted between Yosemite Boulevard (SR132) and the North City Limit.

Using Measure L and Senate Bill 1 funds, the project included frontage improvements such as installing new curbs, gutters, and sidewalks; widening the pavement; upgrading curb returns; enhancing storm drains; resurfacing the roadway; and applying new striping.



The pavement on F Street in Waterford received major upgrades in FY 2023/24

Country Gardens Cape Seal

Next year, Waterford will conduct a cape seal project in the Country Gardens area, in the northeast corner of the city. Cape seals are two-part treatments to seal cracks and extend a road's useful life. This project is expected to begin in July 2025.

FY 2023/24	REVENUE	EXPENDITURES
Waterford Streets & Roads	\$377,176	\$627,418
Waterford Traffic Management	\$75,435	\$0
Waterford Bike & Pedestrian	\$37,718	\$0
Total Waterford	\$490,329	\$627,418

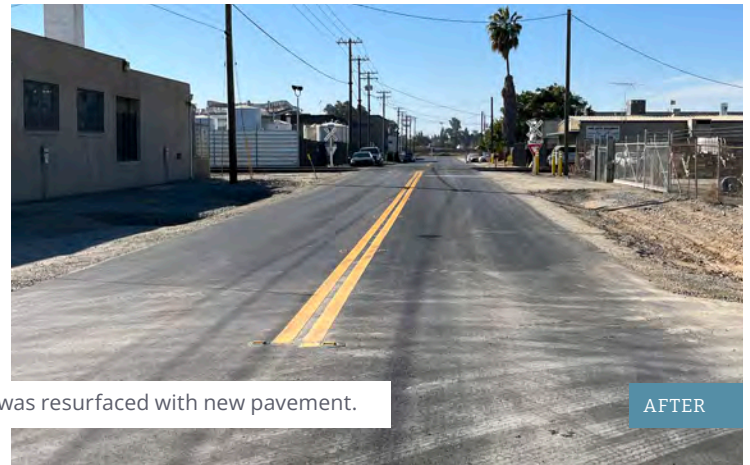
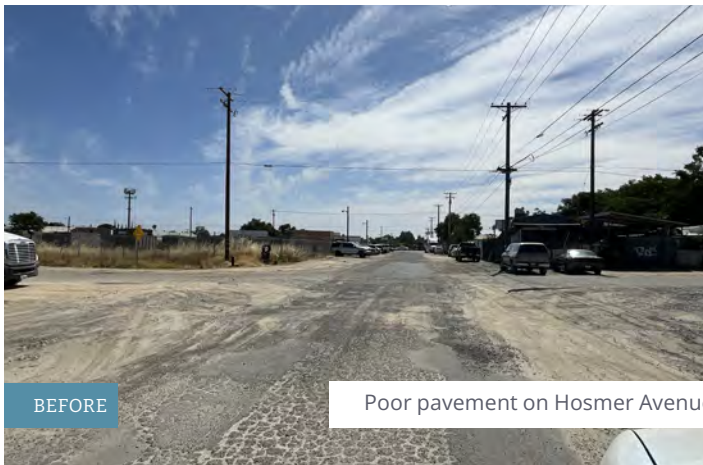
STANISLAUS COUNTY



Urban Pavement Preservation Phase F: Preventative Maintenance and Enhancement of County Roads

Part One of the Urban Pavement Preservation Phase F Project, completed in October 2023, used Measure L funding for preventative maintenance to commercial and industrial roads in Salida, North Modesto, and the Beard Industrial Area. These treatments included slurry seal, asphalt-rubber chip seal, micro surfacing, updated traffic striping, and ADA curb ramp improvements.

Part Two, completed in 2024, combined Measure L and Senate Bill 1 funding to reconstruct three industrial roads in Modesto: Hosmer Avenue, Farrar Avenue, and Garner Road. The project replaced the existing roads, that were in poor condition with new pavement. Part Two also replaced damaged curb and gutter segments and improved drainage.



BEFORE

Poor pavement on Hosmer Avenue was resurfaced with new pavement.

AFTER

FY 2023/24	REVENUE	EXPENDITURES
Stanislaus County Streets & Roads	\$8,076,360	\$9,273,666
Stanislaus County Traffic Management	\$1,615,272	\$737,276
Stanislaus County Bike & Pedestrian	\$807,636	\$3,826,875
Total Stanislaus County	\$10,499,268	\$13,837,817



Keys Road over TID Turlock Main Canal Bridge Replacement Project: Enhancing Safety for a Key Agricultural Route

Serving as a vital east-west corridor for agricultural traffic in central Stanislaus County, the Keys Road bridge over the TID Turlock Main Canal needs replacement. Located 0.8 miles west of Hickman Road, this 100-plus year-old bridge has deteriorated significantly and is currently load-restricted. In late 2025, Stanislaus County will replace the bridge with a new structure and upgrade the bridge railings to enhance safety and reliability. Measure L funds will be used to leverage this project.

REGIONAL PROJECT HIGHLIGHTS

Approximately 28 percent of Measure L funds are used for project development, right-of-way, and/or construction of major corridor projects. As part of the original Measure L Expenditure Plan, the StanCOG Policy Board approved a list of 16 regional projects.

The following is a summary of work accomplished on several of the regional projects still in progress.

State Route 132 West Project: A Safer Route and Better Connections for Our Community

The State Route 132 West project is realigning State Route 132 from Maze Boulevard to a new northern route. This improvement will divert heavy goods movement and interregional traffic out of residential neighborhoods, enhancing safety and reducing congestion. It will also create more reliable connections between homes, farms, and major routes like State Route 99, Interstate-5, and the San Francisco Bay Area.

Phase One, from State Route 99 to Dakota Avenue, was completed in 2023. The next phases will include freeway-to-freeway connections between State Route 99 and State Route 132, along with an extension from Dakota Avenue to Gates Road/Paradise Road.

Right-of-way acquisition is underway for these phases, funded through Measure L and state and federal sources. The interchange and Dakota-to-Gates extension are expected to be completed by 2029.



Future phases of State Route 132 West will continue improvements along the corridor.



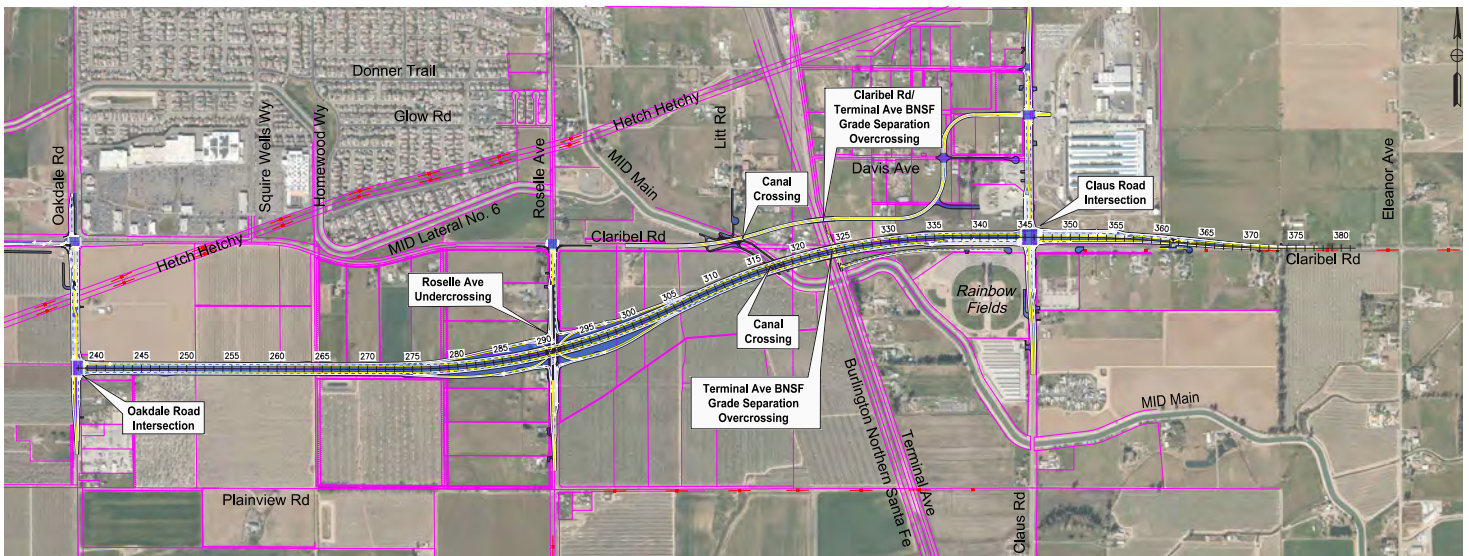
North County Corridor Phase 1: Set for Construction

The North County Corridor Phase 1 Project is a major infrastructure initiative designed to enhance regional connectivity and improve traffic flow in the area. This phase includes new roadway construction and upgrades, with all necessary right-of-way acquisitions, permits, and agreements, including one with BNSF Railway that has already been secured.

Preparatory work, such as the removal of conflicting structures and initial tree removal,

has been completed. Utility relocations are underway to clear the path for construction.

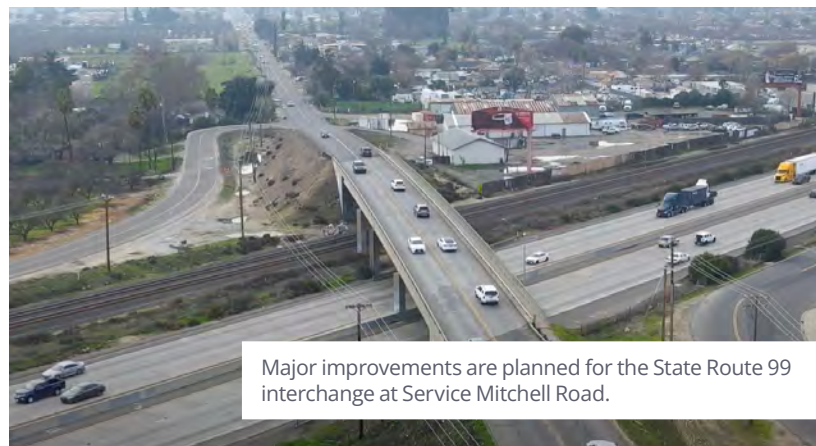
Contracts are expected to be awarded in December 2024, with construction scheduled to start in Spring 2025. Once underway, the construction will take approximately 2.5 years and aims to provide a safer and more efficient transportation route for local and through traffic.



Construction is planned to start in Spring 2025 on the North County Corridor Phase 1 improvements (shown in blue), just south of Riverbank.

State Route 99/Service Mitchell Interchange

The City of Ceres is receiving Measure L regional funds to support the development of the future Service Mitchell Road Interchange project. The City has completed design review and is continuing to make progress on this regional priority. The completed interchange will provide smoother and safer access to State Route 99 than the current Mitchell Road.



State Route 99 Briggsmore Interchange

The City of Modesto is using Measure L regional funds to develop the Briggsmore Avenue/Carpenter Road Interchange, which focuses on improving local roadway network connectivity and active transportation planning while reducing demand on the interchange.

The combination of interchange and local roadway alternatives with integrated active transportation facilities will improve traffic circulation, reduce congestion, reduce vehicle miles traveled, and accommodate mode shift through alternative modes of travel.

The Project Study Report (PSR) is anticipated to be completed in early 2025 and the Project Approval and Environmental Document will begin in early 2025 after approval of the PSR.



Improvements will be made to the West Briggsmore Avenue and North Carpenter Road interchange at State Route 99.

State Route 99 Beckwith-Standiford Interchange

The City of Modesto, in cooperation with Caltrans, is developing the Beckwith-Standiford Multimodal Safety and Complete Streets Project to improve access, safety, and mobility for all travel modes and traffic operations. The improvements to the interchange and surrounding area will improve safety and reduce congestion by eliminating long backups.

The project will also provide separate and dedicated pathways for bicycles and pedestrians, as well as modern facilities for transit and electric vehicles. The project began the environmental review process in late 2024 and construction is tentatively scheduled to begin in 2029.



The interchange of Beckwith Road and Standiford Avenue at State Route 99 north of Modesto will see major improvements.

TRANSIT IN STANISLAUS COUNTY

A portion of funding from Measure L is set aside to support public transportation in Stanislaus County. Transit offers a convenient way for residents to travel without having to rely on a car and is a vital service for our county's seniors, veterans, and people with disabilities.



Stanislaus Regional Transit Authority (StanRTA)

StanRTA was created in July 2021 by merging the former Modesto Area Express (MAX) and Stanislaus Regional Transit (StaRT). Serving rural, suburban, and urban areas of Stanislaus County, StanRTA operates 27 fixed routes, demand response services, and commuter service. Measure L funding helps support StanRTA's improvements.



Since the merger, ridership has surged – up from 2.4 million in 2019, when services were split, to nearly 3 million in 2023, a remarkable 22% increase! StanRTA's continued growth reflects its vital role in connecting people and places within the region.



MOVE Stanislaus Transportation

MOVE provides transportation services for individuals with disabilities, seniors, and Veterans. MOVE services are funded through Measure L, the Transportation Development Act, and the Federal Transit Administration (FTA) Section 5310 Enhanced Mobility of Seniors and Individuals with Disabilities program.

Care Cruisers, one of the many programs offered through MOVE, provides door-through-door and point-to-point van and bus transportation and supportive assistance for seniors who need to get to and from medical appointments, shop for groceries, and access other locations within the county. Care Cruisers reflects the desire of Measure L voters to protect the independence, health, and wellness of seniors and people with disabilities.



Turlock Transit

Turlock Transit provides public transportation for residents and visitors in the City of Turlock, operating bus routes that connect various parts of the city. All routes begin and end at the Roger K. Fall Transit Center in Turlock, with service reaching as far north as Christoffersen and Crowell and as far south as Linwood and Amberwood. Measure L funds help subsidize Turlock Transit operations, allowing the service to offer affordable transit fares to riders in Turlock and Denair.

FY 2023/24	REVENUE	EXPENDITURES
StanRTA	\$771,116	\$771,203
MOVE	\$1,257,254	\$1,348,936
Turlock Transit	\$67,054	\$67,054
Total Transit	\$2,095,424	\$2,187,193

ABOUT

STANCOG AND MEASURE L OVERSIGHT

StanCOG is a council of city and county governments comprised of the cities of Ceres, Hughson, Modesto, Newman, Oakdale, Patterson, Riverbank, Turlock, and Waterford, and Stanislaus County, that was established in 1971 by a Joint Powers Agreement (JPA) to address regional transportation issues.

StanCOG is the Metropolitan Planning Organization (MPO) for the Stanislaus region as designated by the federal government, the Regional Transportation Planning Agency (RTPA) as designated by the State of California, and the Local Transportation Authority (LTA). As the LTA, StanCOG administers Measure L funding for the region. As a designated MPO and RTPA, StanCOG receives federal and state funding for the region, and is the transportation policy-making organization that works with local governments and citizens in its region to address issues and needs that cross city and county boundaries. StanCOG is responsible for developing and updating a variety of transportation plans and for allocating the federal, state, and local funds to implement and prepare them.

While regional transportation planning is its primary role, issues that affect the entire region such as air quality are also part of StanCOG's mandate.

StanCOG's Measure L Oversight Committee makes recommendations to the StanCOG Policy Board and has the following responsibilities:

- Annually review the independent fiscal audit of the expenditure of the tax funds and issue an annual report on its findings regarding compliance with the requirements of the Expenditure Plan and the Ordinance.
- Provide oversight of the proper use of sales tax funds and implementation of the programs and projects set forth in the Expenditure Plan and making recommendations to the Board.

The Measure L Oversight Committee consists of one representative appointed by each of the ten jurisdictions in Stanislaus County.

StanCOG's Mission

To provide planning coordination that enhances the quality of life in the Stanislaus region by working with local governments, state and federal agencies, and the public to create real solutions to regional transportation issues.

StanCOG's Vision

Creating a dynamic transportation network that safely and efficiently moves people and goods, improves the region's air quality, and enhances the lives of the region's residents.

StanCOG Policy Board



Javier Lopez
Chair – City of Ceres



Pam Franco
Vice Chair – City of Turlock



George Carr
City of Hughson



Rosa Escutia-Braaton
City of Modesto



David Wright
City of Modesto



Sue Zwahlen
City of Modesto



Casey Graham
City of Newman



Kayleigh Gilbert
City of Oakdale



Michael Clauzel
City of Patterson



Richard O'Brien
City of Riverbank



Charlie Goeken
City of Waterford



Vito Chiesa
Stanislaus County



Buck Condit
Stanislaus County



Chance Condit
Stanislaus County



Mani Grewal
Stanislaus County



Terry Withrow
Stanislaus County



Dennis Agar
Caltrans Ex-Officio

Members of MLOC

Chair Paul Van Konynenburg
Stanislaus County

Vice-Chair Derik Dami
City of Turlock

Dave Pratt City of Ceres

Mike Day City of Hughson

Craig Lewis City of Modesto

Justin Bochmann City of Oakdale

Pete La Torre City of Patterson

Cary Pope City of Riverbank

Jose Aldaco City of Waterford

StanCOG Staff

Rosa De León Park
Executive Director

Jean Foletta
Deputy Director of Operations

Elisabeth Hahn
Deputy Executive Director
of Planning

Cindy Malekos
Director of Administrative Services

José Luis Cáceres
Director of Programming
and Program Delivery

Nick St Cook
Associate Planner

Blake Dunford
Associate Planner

Enrique Paez
Interim Senior Financial Services
Specialist

Steve Van Denburgh
Programming and Project
Delivery Advisor

Josephine Oshana
Executive Administrative Assistant

Shannon Silva
Office Supervisor

Monica Streeter
General Counsel

Tony Harris
Manager of Strategic
Project Delivery

THANK YOU FOR
YOUR SUPPORT
OF MEASURE L